



Education

# Prices and Dates 2024

Schools in the UK,  
USA, Canada,  
Australia, New  
Zealand, France  
& Switzerland



[www.global-edu.com.mx](http://www.global-edu.com.mx)



# The Experience

"Hampstead provided an excellent environment to learn English and have fun. It was one of the best experiences of my life."

GABRIELLA ILLÉS, TV PRODUCER, HUNGARY

1

## Your programme starts at home



With E-L you can access learning materials and start your academic programme as soon as you book.

2

## A warm welcome upon arrival



You will arrive to a warm welcome from your host family or at your residence to make sure you are comfortable and get fully settled.

5

## Continuous appraisal



We continuously monitor your progress through a regular system of testing and customised learning plans. Through E-L you can access your academic information, including test scores and tutorial reports.

4

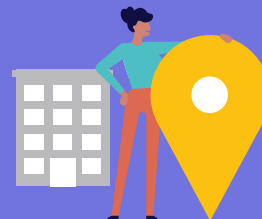
## First day in school



Our friendly staff will explain everything you need to know about your programme. You'll have a thorough skills test to ensure that we place you into the right class, we'll introduce you to our cultural and social programme and we'll ensure that you meet all your classmates and the school staff.

3

## Orientation in the school



6

## Clear and substantiated progress



Entry tests and exit tests, along with regular appraisal from our academic staff show you how much progress you've made during your programme.

7

## Graduation ceremony



In the graduation ceremony, you'll receive your graduation certificate and celebrate your programme with your new friends

\* Not available in all centres. Please check with the school at the time of booking

# Aprende inglés con GLOBAL en Brighton



**GLOBAL Brighton**  
**55-61 Portland Road**  
**Brighton, Inglaterra, BN3 5DQ**  
**Informes e inscripciones: +52 55 3333-3045**  
**info@global-edu.com.mx**

La bulliciosa ciudad costera de Brighton es famosa no solo por su muelle histórico y su icónico dulce de roca, sino también por sus numerosas y diversas posibilidades de ocio en una ciudad rebotante de cultura juvenil vibrante. Repleta de increíbles tiendas, restaurantes y bares y con un pintoresco encanto costero, Brighton es un destino animado y acogedor para estudiantes de todas las edades y procedencias que deseen estudiar inglés en Inglaterra.

Nuestra escuela de Brighton consiste de dos campus, con tan solo diez minutos a pie entre sí. En los alrededores hay tiendas, cafés, pubs, restaurantes y lugares de diversión. GLOBAL Brighton ofrece un ambiente acogedor para aprender inglés. No importa si eliges un programa orientado a los exámenes TOEFL/TOEIC/IELTS, Curso de Exámenes de Cambridge o uno de nuestros cursos EFL/ESL, te beneficiarás de la ubicación céntrica de GLOBAL Brighton, con excelentes comunicaciones de transporte y magníficas instalaciones estudiantiles que incluyen siete aulas y un centro de aprendizaje con acceso gratuito a Internet.

El siguiente es un ejemplo de cómo podrás disfrutar de tu “tiempo libre”. Las actividades de “tiempo libre”, pueden variar por el clima y otras causas fuera de nuestro control.

	Lunes	Martes	Miércoles	Jueves	Viernes	Sábado	Domingo
Week 1	Club de estudio (gratis)	Club de cine (gratis)	Paseo de fantasmas por los Lanes	Pesca en la Marina de Brighton	Observa deportes en la Pantalla Grande de Brighton en el paseo marítimo (gratis)	Excursión de LSI a Seven Sisters (gratis)	Excursiones a Londres, Bath, Stonehenge, Cambridge y Liverpool
Week 2	Club de estudio (gratis)	Club de cine (gratis)	Zona láser	Velada de karaoke (gratis)	Club de lectores (gratis)	Excursiones a Londres, Bath, Stonehenge, Cambridge y Liverpool (varían los precios)	Excursión al proyecto ecológico Stanmer Organics (gratis)
Week 3	Club de estudio (gratis)	Club de cine (gratis)	Bolos	Tradicional té inglés con pastas	Fútbol (gratis)	Excursiones a Londres, Bath, Stonehenge, Cambridge y Liverpool (varían los precios)	Festival del Día del Pueblo (gratis)
Week 4	Club de estudio (gratis)	Club de cine (gratis)	Zona láser	Velada de karaoke (gratis)	Paseo alrededor del muelle (gratis)	Excursiones a Londres, Bath, Stonehenge, Cambridge y Liverpool (varían los precios)	Voleibol de playa





# Horario de Clases\*

	<b>Lessons 1 &amp; 2*</b> 09:00 – 10:40	<b>Break</b> 10:40– 11:10	<b>Lessons 3 &amp; 4*</b> 11:10 – 12:50	<b>Lunch</b> 12:50 – 13:40	<b>Lessons 5 &amp; 6*</b> 13:40 – 15:45
<b>MONDAY</b>	General 20				
	Intensive 24				
	Intensive 30				
					Afternoon 10
<b>TUESDAY</b>	General 20				
	Intensive 24				
	Intensive 30				
					Afternoon 10
<b>WEDNESDAY</b>	General 20				

[ACADEMIAS DE IDIOMAS](#)

[CONTÁCTANOS](#)

[PRESUPUESTO](#)

[info@ls](mailto:info@ls)

<b>WEDNESDAY</b>	Intensive 30				
					Afternoon 10
<b>THURSDAY</b>	General 20				
	Intensive 24				
	Intensive 30				
					Afternoon 10
<b>FRIDAY</b>	General 20				
	Intensive 24				
	Intensive 30				
					Afternoon 10

Durante los periodos de mayor afluencia, las clases de inglés general pueden impartirse a distintas horas del día. Por favor, consulte con cada escuela al hacer la reserva.

Entre las sesiones de 50 minutos se realiza una pequeña pausa adicional de 5 minutos.



# Brighton (£UK)

## General/Academic/English for Specific Purposes

	ACADEMIC TERM ABROAD	ACADEMIC YEAR ABROAD		
No. of weeks. Prices p/wk	1-3	4-11	12-23	24+
Afternoon 10 <sup>^</sup>	170	165	160	155
General 20	325	315	300	280
Intensive 24	375	360	340	305
Intensive 30	430	390	370	330
Academic English 30 Pathway Programme			370	330
Business English 30 <sup>~</sup>	430	390	370	330
TOEFL 30 /IELTS 30 <sup>~</sup>	430	390	370	330
No. of weeks. Course Prices	4	8	10	11
Cambridge 30 Exam Preparation	1570	3145	3935	4095
Intensive Cambridge CELTA Teacher Training <sup>#</sup>				4470
Prices p/wk				from 1430
English for Teaching Closed groups only				430
English for Teaching G20 + 5 individuals				665
English for Teaching G20 + 10 individuals				1005
Personalised Programme Tailor-made courses available upon request. (e.g. Art, Tourism etc.)				Contact LSI Brighton
One to One Lesson price p/lesson				65
Plus Courses Supplement 5/10 lessons				325/650
<sup>^</sup> Not available on a Short Term Study Visa.				
<sup>&gt;</sup> Options also available as Intensive 24.				
<sup>#</sup> Application required, exam fee included.				

## Premium Courses

One-to-one				
No of lessons p/wk:	20	30	40	50
Course price	1300	1950	2600	3250
9 Day Compact				
No of lessons p/wk			82	92
Course prices			5595	6275

## Club 40+ Experience

Per person, p/wk	
3 activities supplement	290
Please note that these activities are supplementary and exclusively for students aged 40+. This programme needs to be booked in addition to the G20 (mixed-age classes of 16+).	

## Additional Costs

<b>EXAM FEES</b>	
B2 First/C1 Advanced (18+ years old)	Contact LSI Brighton
IELTS	Contact LSI Brighton
<b>OTHER FEES</b>	
Registration fee	90
Courier fee	90
Health insurance p/wk	Contact LSI Brighton
<b>Airport transfer</b> one way	
Heathrow	170
Gatwick	95
Stansted/Luton	240

## Junior Courses

Registration fee	90
<b>English Programmes</b> (Prices per person p/wk)	
Tuition only for ages 6-11 <sup>1</sup> and 12-17 <sup>2</sup>	330
Tuition, lunch + activities for ages 12-17 only <sup>2</sup>	570
<b>English Programme+full board homestay, twin room accommodation</b> for ages 12-17 years <sup>2</sup>	
Winter for groups only	805
Summer for groups & individuals	845
<b>Airport transfer required</b> one way	
Heathrow	175
Gatwick	95
Stansted/Luton	240
Check-in service <sup>2</sup>	

<sup>1</sup> Students aged 6-11 years must be accompanied by a parent or guardian. The programme for students in this age group includes tuition only.

<sup>2</sup> There is a compulsory fee for unaccompanied minors under the age of 16.

## Accommodation

HOMESTAY (Prices per person p/wk)	B&B	HB
Single room	165	210
Twin room*	145	185

Supplements (Prices per person p/wk)	
Special diets B&B/HB	25/45
Summer (Jun 16 - Aug 25)	35
Christmas	50
Executive room private bathroom (en-suite or sole use)	85

## RESIDENCE (Prices per person p/wk)

Portland 55 - on-site residence	
Single room, en suite	275
Twin room*, en suite	240

## Mountford Student House

Single room, shared bathroom	255
Twin room*, shared bathroom	235

## Supplements (Prices per person p/wk)

Summer (Jun 16 - Aug 25)	35
--------------------------	----

Accommodation prices are subject to change throughout the year. Therefore, it is important to contact LSI Brighton to confirm the prices at the time of your exchange programme.

The arrival and departure dates for the homestay are either Saturday to Saturday or Sunday to Sunday.

\* When two students book for the same start and end date.

## Other accommodation options available

## Additional Course Information

Class size: Max 16 students.

Lesson duration: 50 min (45 min for Premium Courses).

## General Courses & Business English

Start dates for Elementary to Advanced levels: Every Monday

Start dates for Beginner level: First Monday of Feb, Apr, Jun, Sep and Nov

## Pathway Programme/Academic Term Abroad (ATA)/Academic Year Abroad (AYA)

Start date: First Monday of January, April and September.

## Academic English/TOEFL & IELTS

Start date: Every Monday.

Recommended start dates: First Monday of Jan, Apr and Sep.

Exams are provided by third parties. For exam prices & test-centre locations, please contact LSI Brighton.

## Cambridge English Exam Preparation

Start dates: B2: Jan 8 - 11 wks; Jul 29 - 4 wks; Sep 23: B2 - 8 wks

C1: Jan 8 - 10 wks; Jul 29 - 4 wks; Sep 23: C1 - 8 wks

C2: May 13 - 10 wks; May 27 - 4 wks, Sep 16 - 12 wks

Please be advised that classes availability are depending on demand.

Exam dates: B2 First: Mar 23, Aug 23, Nov 16

C1 Advanced: Mar 16, Aug 23, Nov 16

C2 Proficiency: Jun 20, Jul 6, Dec 2

\*\* Computer-based exam.

The exam dates are paper-based or computer based.

Please be aware that all dates are subject to change at short notice based on demand. To obtain further information, please contact the school directly.

## Premium Courses

Start dates for One-to-one: Every Monday.

Start dates for 9 Day Compact: Every Saturday.

## Club 40+

Start dates: Mar 4, May 6, Sep 2 and Nov 4.

## Public Holidays

No instruction on the following dates: Jan 1, Mar 29, Apr 1, May 6, 27, Aug 26.

Christmas & New Year: School is closed from Dec 23 2024 to Jan 3 2025 inclusive.

2025: School reopens on Jan 6.



## Costo de Vida\*

\*El costo de vida es estimado y por decision del proveedor, puede variar sin previo aviso.

 1 GBP 2 litros de agua	 1.5 GBP Barra de pan	 1 GBP 1 litro de leche	 4.5 GBP Cerveza	 1 GBP Refresco	 2.5 GBP Café
 6 GBP Menú hamburguesa	 4 GBP Sandwich	 12 GBP Menu de dos platos	 10 GBP Cine	 25 GBP Teatro	 20 GBP Entrada discoteca
 5 GBP Coste tarjeta SIM	 37 GBP Bono transporte semanal				

**GLOBAL Londres**  
**19-21 Ridgemount Street**  
**Londres, Inglaterra WC1E 7AH**  
**Informes e inscripciones: +52 55 3333-3045**  
**info@global-edu.com.mx**

