



Education

Prices and Dates 2024

Schools in the UK,
USA, Canada,
Australia, New
Zealand, France
& Switzerland



www.global-edu.com.mx

The Experience

"Hampstead provided an excellent environment to learn English and have fun. It was one of the best experiences of my life."

GABRIELLA ILLÉS, TV PRODUCER, HUNGARY

1

Your programme starts at home



With E-L you can access learning materials and start your academic programme as soon as you book.

2

A warm welcome upon arrival



You will arrive to a warm welcome from your host family or at your residence to make sure you are comfortable and get fully settled.

3

Orientation in the school



First day in school



5

Continuous appraisal

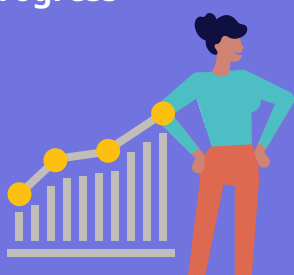


We continuously monitor your progress through a regular system of testing and customised learning plans. Through E-L you can access your academic information, including test scores and tutorial reports.

Our friendly staff will explain everything you need to know about your programme. You'll have a thorough skills test to ensure that we place you into the right class, we'll introduce you to our cultural and social programme and we'll ensure that you meet all your classmates and the school staff.

6

Clear and substantiated progress



Entry tests and exit tests, along with regular appraisal from our academic staff show you how much progress you've made during your programme.

7

Graduation ceremony



In the graduation ceremony, you'll receive your graduation certificate and celebrate your programme with your new friends

* Not available in all centres. Please check with the school at the time of booking

Aprende inglés con GLOBAL en Boston



GLOBAL Boston
105 Beach Street
Boston, MA 02111

Informes e inscripciones: +52 55 5401-5202
info@global-edu.com.mx

Boston es una de las ciudades más antiguas de EE.UU. Es rica en patrimonio cultural y ofrece a sus visitantes una gran variedad de cosas para ver y hacer. Desde el Museo de Bellas Artes hasta patinar en el parque Boston Common, pasando por participar en un partido de béisbol en Fenway Park, Boston tiene algo para todo el mundo – el destino ideal para aquellos que quieran estudiar inglés en Estados Unidos.

GLOBAL Boston está situada en los límites de Chinatown y de la zona de teatros y financiera, cerca de las estaciones de metro, autobús y ferrocarril de cercanías. Nuestra escuela de inglés cuenta con excelentes instalaciones que te ayudarán a estudiar el idioma, incluyendo una biblioteca de recursos para estudiantes, sala con computadoras con acceso a Internet y un salón para los estudiantes. Ofrecemos cursos de preparación para TOEFL, así como programas de inglés como segunda lengua más generales.

El siguiente es un ejemplo de cómo podrás disfrutar de tu “tiempo libre”. Las actividades de “tiempo libre”, pueden variar por el clima y otras causas fuera de nuestro control.

	Lunes	Martes	Miércoles	Jueves	Viernes	Sábado	Domingo
Week 1	Cena en el restaurante Shabu-Zen	Noche de cine	Merienda en la Playa de Revere	Marisquería	Visita al museo de arte ICA	Música, arte, gastronomía y cultura en el Festival del Río de Cambridge (entrada gratuita)	Visita al Mercado de Artistas de SoWa
Week 2	Festival de deportes	Velada gastronómica mexicana	¡Festival de consumo ilimitado de helado en Scooper Bowl!	Museo del Bellas Artes	Velada gastronómica coreana	Paintball wih Tim & Sasha	Festival de Barcos Dragón de Boston
Week 3	Música en directo en el Boston Harbor Hotel	Espectáculo	Actividad de misterio - ¡déjenos sorprenderle! Encuentro en la escuela a las 14 horas	Paseo a pie por Boston histórico	¡Película de viernes por la noche gratis en la Explanada - trae tu propia merienda!	Excursión de fin de semana a Cape Cod y Provincetown	Parque de atracciones Six Flags
Week 4	Observa los barcos de época en el Boston Harborfest	Encuentro de béisbol de los Red Sox	Velada gastronómica italiana	Bolos	Salto en trampolines bajo techo	Excursión de fin de semana a Nueva York	¡Paseo en kayak por el Río de Charles!



Horario de Clases*

	Lessons 1 & 2* 09:00 – 10:40	Break 10:40 – 11:10	Lessons 3 & 4* 11:10 – 12:50	Lunch 12:50 – 13:40	Lessons 5 & 6* 13:40 – 15:45
MONDAY	General 20				
	Intensive 24				
	Intensive 30				
					Afternoon 10
TUESDAY	General 20				
	Intensive 24				
	Intensive 30				
					Afternoon 10
WEDNESDAY	General 20				
	Intensive 24				
	Intensive 30				
					Afternoon 10
THURSDAY	General 20				
	Intensive 24				
	Intensive 30				
					Afternoon 10
FRIDAY	General 20				
	Intensive 24				
	Intensive 30				
					Afternoon 10

*El horario de clases está sujeto a cambios por el volumen de estudiantes.

Boston (\$US)

General/Academic/English for Specific Purposes

	ACADEMIC TERM ABROAD	ACADEMIC YEAR ABROAD		
No. of weeks. Prices p/wk	1-3	4-11	12-23	24+
Afternoon 10 [^]	230	220		
General 20	445	425	400	370
Intensive 25	505	480	455	420
Intensive 30	570	540	505	465
Academic English 30			505	465
Business English 30 [~]	570	540	505	465
TOEFL 30/IELTS 30 [~]	570	540	505	465
No. of weeks. Course Prices	4	8	10	12
Cambridge 30 Exam Preparation	2035	4070	5090	6110
Prices p/wk				
SAT/GMAT				570
English for Teaching Closed groups only				570
English for Teaching G20 + 5 individuals				945
English for Teaching G20 + 10 individuals				1440
Personalised Programme Tailor-made courses available upon request. (e.g. fashion, social media etc.)				Contact LSI Boston
One to One Lesson				95
Plus Courses Supplement 5/10 lessons				475/950

[^] Not available on a Student Visa.

[~] Options also available as Intensive 25.

Premium Courses

One-to-one			
No of lessons p/wk:	5	10	20
Course price	475	950	1900
Mini Group (Business/General English/Exam Prep)			
No of lessons p/wk:	20	30	
Course prices	1 wk	1075	1580
	2 wks	1055	1540
	3 wks	1030	1500
	4+ wks	1010	1470

Additional Costs

EXAM FEES

B2 First/C1 Advanced	Contact LSI Boston
----------------------	--------------------

OTHER FEES

Registration fee	175
Courier fee	90
Health insurance p/wk	35
Airport transfer one way	135
Airport transfer U18 supplement	55

Accommodation

Placement fee	150
HOMESTAY (Prices per person p/wk for 1+ weeks)	B&B HB
Single room	285 365
Twin room*	255 315

Supplements (Prices per person p/wk)

Special diets B&B/HB	25/50
Summer (Jun 16 - Aug 25)	40
Christmas	60
Executive room private bathroom (en-suite or sole use)	90

RESIDENCE (Prices per person p/wk)

ESL Townhouse* (No meals, 4 weeks minimum staying)

Single room, shared bathroom	Contact LSI Boston
Twin room, shared Bathroom†	Contact LSI Boston

IGH - International Guest House†

Single room, shared bathroom	Contact LSI Boston
Twin, shared bathroom†	Contact LSI Boston

Please note that accommodation prices are subject to changes throughout the year. It is important to contact LSI Boston to confirm the prices at the time of your exchange programme.
The arrival and departure dates for the homestay are either from Saturday to Saturday or from Sunday to Sunday.
Arrival and departure dates for Residence: Saturday to Saturday.
* When two students book for the same start and end date.
* A \$250 refundable security deposit charged on arrival at the residence. \$200 Non-Refundable move in fee charged.
† A \$200 refundable security deposit will be charged upon arrival at the residence (cash only).

Other accommodation options available

Additional Course Information

Class size: Max 16 students.
Lesson duration: 50 min (50 min for Premium Courses).

General Courses, Business English

Start dates for Elementary to Advanced levels: Every Monday.
Start dates for Beginner level: Jan 8, Apr 1, July 8, Oct 7.

Academic Term Abroad (ATA)/Academic Year Abroad (AYA)

Start dates: First Monday of Jan, Apr and Sep.

Academic English/TOEFL & IELTS

Start date: Every Monday.
Recommended start dates: First Monday of Jan, Apr and Sep.

Cambridge English Exam Preparation

Start dates: B2: Mar 18 - 10 wks; May 13 - 10 wks; Jul 22 - 9 wks; Sep 23: B2 - 8 wks,
Nov 18 - 4wks
C1: May 7 - 12 wks; Jul 29 - 4 wks; Aug 26: C1 - 12 wks, Nov 18 - 4wks
C2: May 13 - 4wks; Oct 14 - 8 wks

Please be advised that classes will only be conducted if there are a minimum of 5 students.

Exam dates: B2 First: Mar 9, May 25, Jul 20, Sep 21, Nov 16, Dec 14
C1 Advanced: Mar 16, Jun 15, Jul 26, Aug 23, Nov 16, Dec 14
C2 Proficiency: Mar 2; Jun 8; Nov 30

The exam dates are paper-based. Computer-based exams may be subject to alternative dates upon request and availability of the center. Please be aware that all dates are subject to change at short notice based on demand.
To obtain further information, please contact the school directly.

SAT/GMAT, English for Teaching

Start dates: contact LSI Boston.

Premium Courses

Start dates for One-to-one & Mini Group: Every Monday.

Public Holidays

No instruction on the following dates: Jan 1, 15, Feb 19, Mar 29, Apr 1, May 27, Jun 19, Jul 4, Sep 2, Oct 14, Nov 5, 11, 28, 29.
Christmas & New Year: School is closed from Dec 23 to Jan 1 2025 inclusive.
2025: School reopens on Jan 2.

Junior Courses

Registration fee	175
English Programmes for ages 12-17 years	(Per person p/wk)
Tuition only	Contact LSI Boston
Tuition + activities	Contact LSI Boston
Tuition + full board homestay + activities	Contact LSI Boston
Tuition + full board homestay + activities + weekend tours	Contact LSI Boston
Health Insurance required (p/wk)	35
Airport transfer required one way	135

Please note: Junior programmes in Boston are offered for closed groups only.

Class size: 18 students.
Lesson duration: 50 min.

Start dates (Homestay)

Every Monday from:
Winter 2024: Jan 8 to Jan 29 (course ends Feb 2, students depart Feb 3). GROUPS ONLY.
Summer 2024: Jun 24 to Aug 12 (course ends Aug 16, students depart Aug 17). GROUPS ONLY.
Winter 2025: Jan 6 to Feb 3 (course ends Feb 7, students depart Feb 8). GROUPS ONLY.

Additional course information

Standard timetable: Arrivals are on Sunday and departures are on Saturday. The maximum booking length for accommodation homestay is 4 weeks (27 nights) for individuals under 16 years old.

Junior Courses for Groups

In addition to our published start dates, the school can accommodate groups of various age ranges at different times throughout the year. Maximum class sizes for closed groups are negotiable. One group leader may accompany each group of 10 to 15 students for free, including transfers, accommodation, and activities. For any additional leaders accompanying groups with fewer than 15 students, there will be a charge.

Costo de Vida*

*El costo de vida es estimado y por decision del proveedor, puede variar sin previo aviso.



1.5 USD
2 litros de agua



2.5 USD
Barra de pan



1 USD
1 litro de leche



4 USD
Cerveza



2 USD
Refresco



3 USD
Café



8 -10 USD
Menú hamburguesa



7 -10 USD
Sandwich



20 USD
Menu de dos platos



15 USD
Cine



15 -100 USD
Teatro



20 -25 USD
Entrada discoteca



5 -10 USD
Coste tarjeta SIM



21.25 USD
Bono transporte
semanal

GLOBAL Boston
105 Beach Street
Boston MA 02111
Informes e inscripciones: +52 55 5401-5202
info@global-edu.com.mx

